



*challenging new frontiers
a voyage beyond excellence*

BINA MARINE 71 – 1200 HP

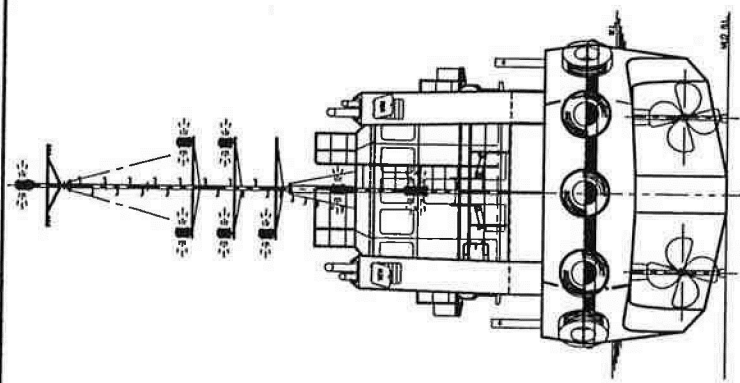


<u>VESSEL INFORMATION</u>		<u>PROPULSION SYSTEM</u>	
Flag / Port of Registry	Singapore	Main Engine	2 x Yanmar 6AYM WST,485kw@1900rpm
Builder	Forward Marine Enterprise (M) Sdn Bhd	Propulsion	Twin Screw / Fixed Pitch Propeller
Year Built	2011	<u>GENERATORS</u>	
Call Sign	9V9487	Main Genset Engine	2 x Yanmar 4TNV98-GGE2 / 2 x 25KVA
Official No.	397175	Vessel Power supply	415V/220V/50HZ
IMO No.	9631931	<u>Deck Machinery</u>	
Class / Notation	GL / 100A5 MC	Towing Hook	20T with Quick Release Mechanism
<u>PRINCIPAL PARTICULARS</u>		Anchor Windlass	17.5MM Electric windlass c/w double gypsy and double drum
Length Overall	23.5 M	Anchor / Chain	2 X 360KG / L: 247.5m D: 17.5mm
Breadth Moulded	7.32 M	<u>NAVIGATION EQUIPMENT</u>	
Depth Moulded	3.2M	GPS	FURUNO GP 32
Maximum Draft	2.7M	VHF	ICOM KM 302
GRT / NT	145T / 49T	SSB RADIO	FURUNO FS-1503
Deadweight	104T	Radar (24 NM)	FURUNO 1751
Speed	10 Knots	Echo Sounder	FURUNO FCV-620
<u>TANK CAPACITIES</u>		Magnetic Compass	Daiko T-150B
Fuel Oil	91.4M ³	<u>LSA</u>	
Fresh Water	26 M ³	Life Raft	2 x 10 men

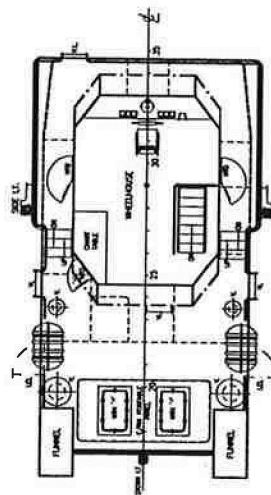
Particulars believed to be correct but not guaranteed. All figures given are approximate only. Owners reserve the right to amend the specifications without notice.

MARCO POLO MARINE LIMITED 66 Kallang Pudding Road Hor Kew Business Centre #05-01 Singapore 349324 Tel: 6741-2545 Fax: 66594612

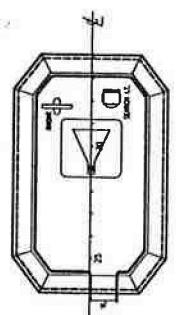
Email: ops.shipping@marcopolomarine.com.sg www.marcopolomarine.com.sg



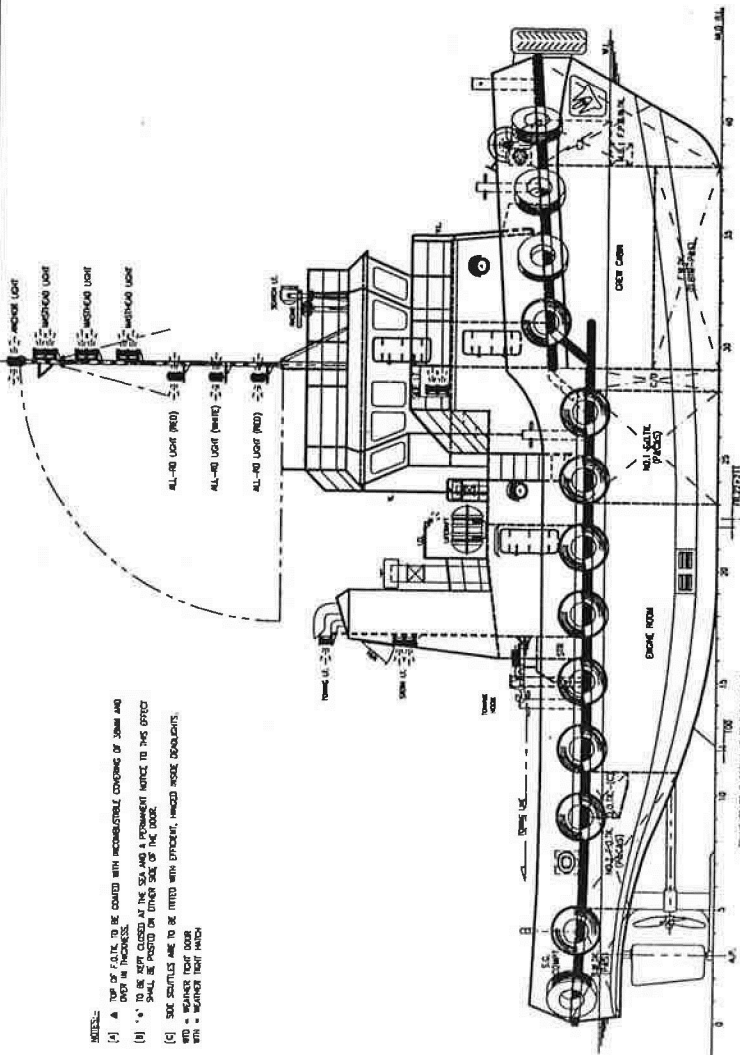
STERN VIEW



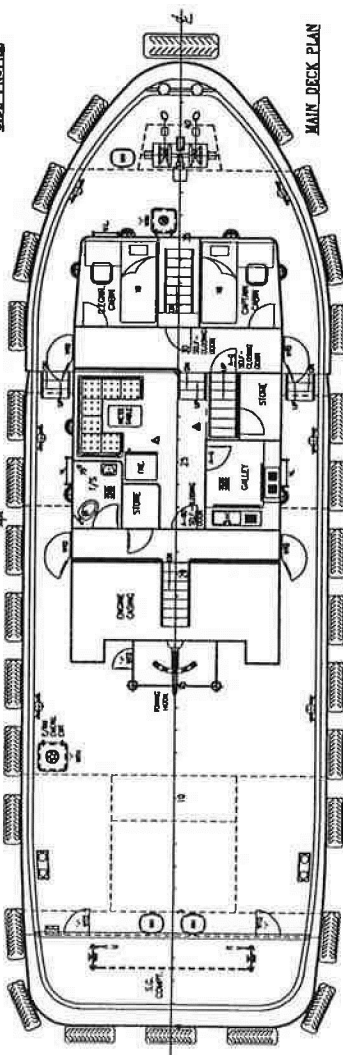
BRIDGE DECK PLAN



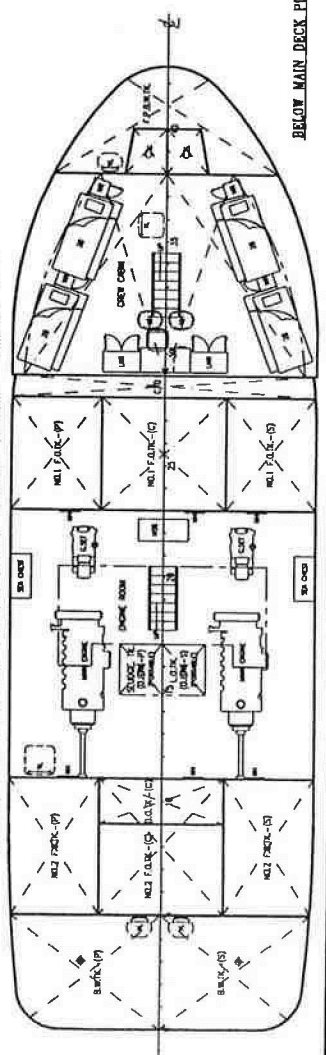
WHEELHOUSE TOP



SIDE PROFILE



MAIN DECK PLAN



BELOW MAIN DECK PLAN

PRINCIPAL PARTICULARS

L.O.A. 21.500M (71.0FT)
 L.B.L. 22.850M (75.0FT)
 L.B.P. 21.322M (69.9FT)
 BREADTH MOULDED 7.115M (24.0FT)
 DEPTH MOULDED 3.200M (10.5FT)
 DESIGN DRAFT 2.700M (8.8FT)
 (SUBJECT TO FREEBOARD ASSIGNMENT)
 COMPLIMENT 10 MEN
 SPEED 10 KNOTS
 P.O. CAPACITY 79 TONS (APPROX.)
 F.W. CAPACITY 26 TONS (APPROX.)
 MAIN ENGINE 650HP(1) 9000RPM + 2 UNITS
 GEAR BOX MKC 364L, RATIO 5.048:1
 GENERATOR 28KW + 2 UNITS
 NAVIGATION AREA UNRESTRICTED
 PORT OF REGISTRY SINGAPORE
 FLAG SINGAPORE

UNITED SHIP DESIGN
 (NAVAL ARCHITECTS)
 NO. 1, 1ST FLOOR, LORONG CHOKER, 2
 TEL : 4344-1234, FAX : 4344-1235
 E-MAIL : info@usd.com.sg
 WEBSITE : www.usd.com.sg

23M TUG BOAT

GENERAL ARRANGEMENT

REVISION	DATE	BY	CHKD
1	22.10.13		

OWNER	DESIGNER	SCALE	DATE
UNITED SHIP DESIGN	UNITED SHIP DESIGN	1 : 50	22.10.13

CLASS	APPROVED	DATE
UNITED SHIP DESIGN	UNITED SHIP DESIGN	22.10.13

REVISION	DATE	BY	CHKD
1	22.10.13		

REVISION	DATE	BY	CHKD
1	22.10.13		

REVISION	DATE	BY	CHKD
1	22.10.13		

REVISION	DATE	BY	CHKD
1	22.10.13		

REVISION	DATE	BY	CHKD
1	22.10.13		

REVISION	DATE	BY	CHKD
1	22.10.13		